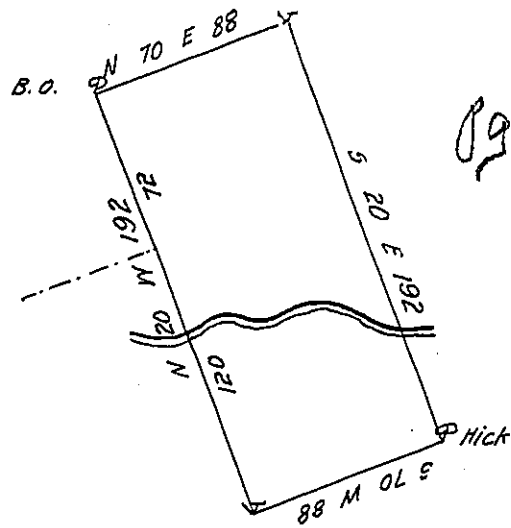


Jn^o Havouracre

Jn^o Havouracre

Devald Baum



09 41
Vacant Land

Vac^t Land

By Virtue of a Warrant from the Proprietaries dated the Thirty first day of May 1734 Surveyed unto Ulrick Sheer a tract of land situate ^{near} ~~at~~ Oley in in the County of Philadelphia Beginning at a Black Oak a Corner of John Havouracre's land thence by the same North Seventy degrees East Eighty Eight Perches to a Post thence by Vacant Land South Twenty degrees East one hundred & ninety two Perches to a Hickery thence by Vacant land South Seventy degrees West eighty eight perches to a Post a Corner of Devald Baums land thence by the same North Twenty degrees West One hundred and twenty Perches & the same Course by land of Jacob Spenglar Seventy two Perches to y^e place of Beginning Containing one hundred acres with the allowance of Six P. Cent

Surveyed June 24th 1734

By Nich^o Scull -

IN TESTIMONY that the above is a copy of the original remaining on file in the Department of Internal Affairs of Pennsylvania, made conformably to an Act of Assembly approved the 16th day of February, 1833, I have hereunto set my Hand and caused the Seal of said Department to be affixed at Harrisburg, this *first* day of *August* 1906

Isaac B. Perry
Secretary of Internal Affairs.